





# TEBETS

Technological Boost for Efficient port Terminal operations following Safety related events

Competence center START 4.0

Veronica Asta

OPTIMeasy, Founder

[veronica.asta@optimeasyway.com](mailto:veronica.asta@optimeasyway.com)

December 16<sup>th</sup>, 2021



PROVIDES AN EASY APPROACH  
TO OBTAIN DECISION SUPPORT SYSTEMS FOR A CONSISTENT COMPETITIVE EDGE  
USING OPERATION RESEARCH AND OPTIMIZATION TECHNIQUES



OPTIMeasy TAKES ADVANTAGE FROM THE INTEGRATION OF TRANSVERSAL SKILLS



FOR A HOLISTIC APPROACH TO REAL PROBLEMS

Partnership agreements for exploiting complementary skills



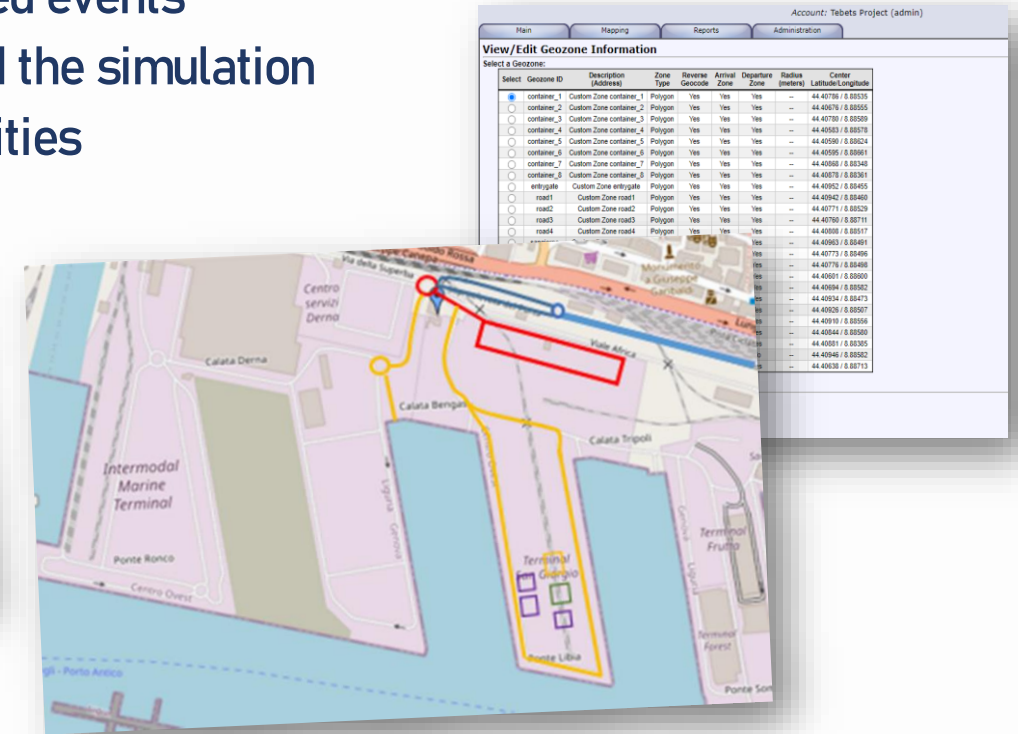
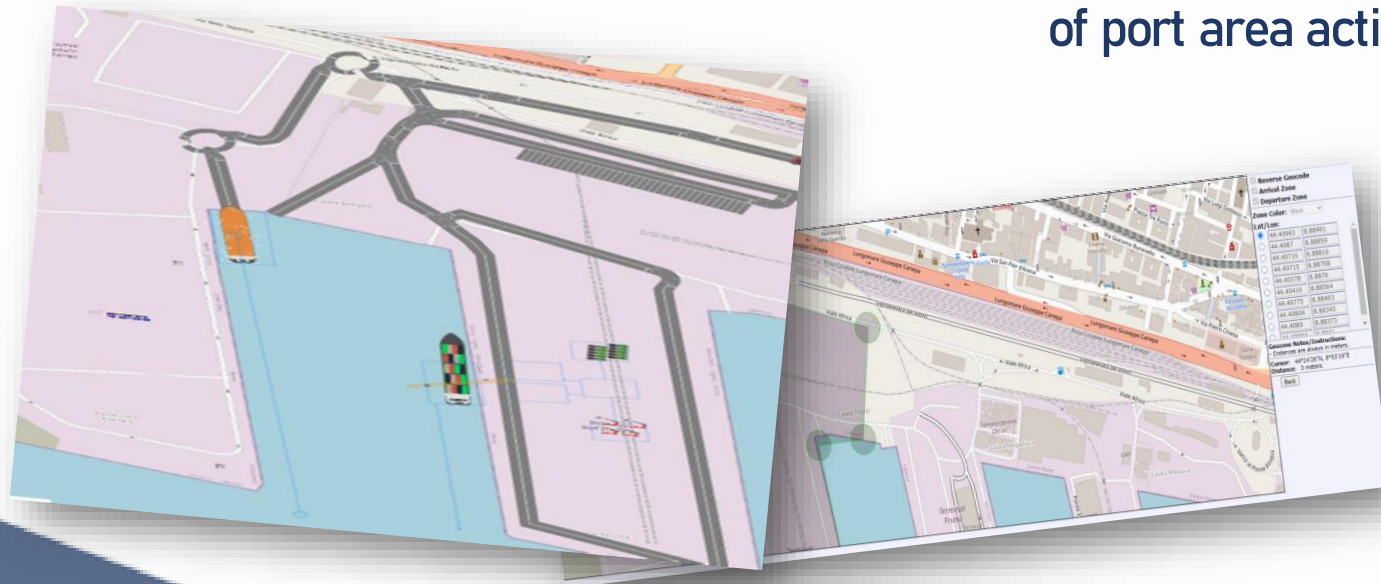
## LOB OPTIMIZATION 4.0

Control room prototype for a multipurpose port terminal

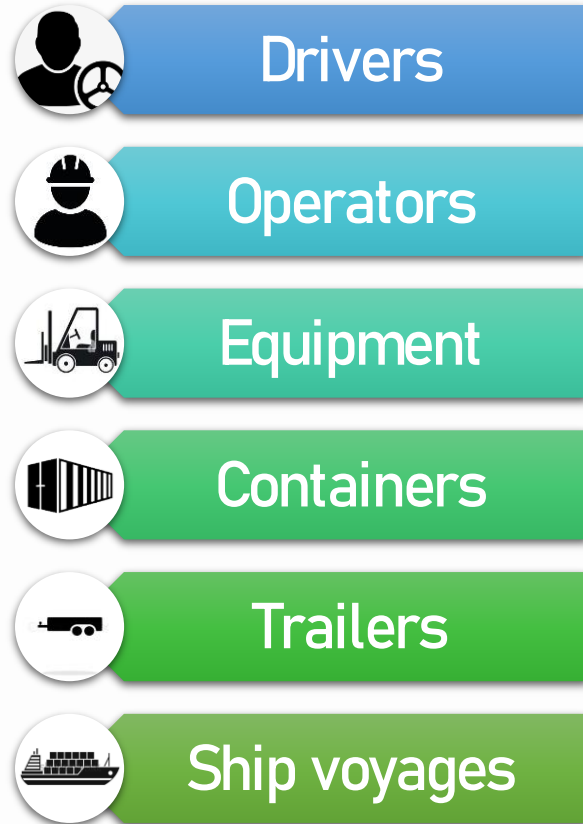
with the goal of proposing actions capable of stemming dangerous situations

thanks to the use of virtual and increased reality,  
Artificial Intelligence, Machine Learning and Big Data

Decision support tool  
for efficient management of multipurpose Terminal operations  
following safety-related events  
through the visualization and the simulation  
of port area activities

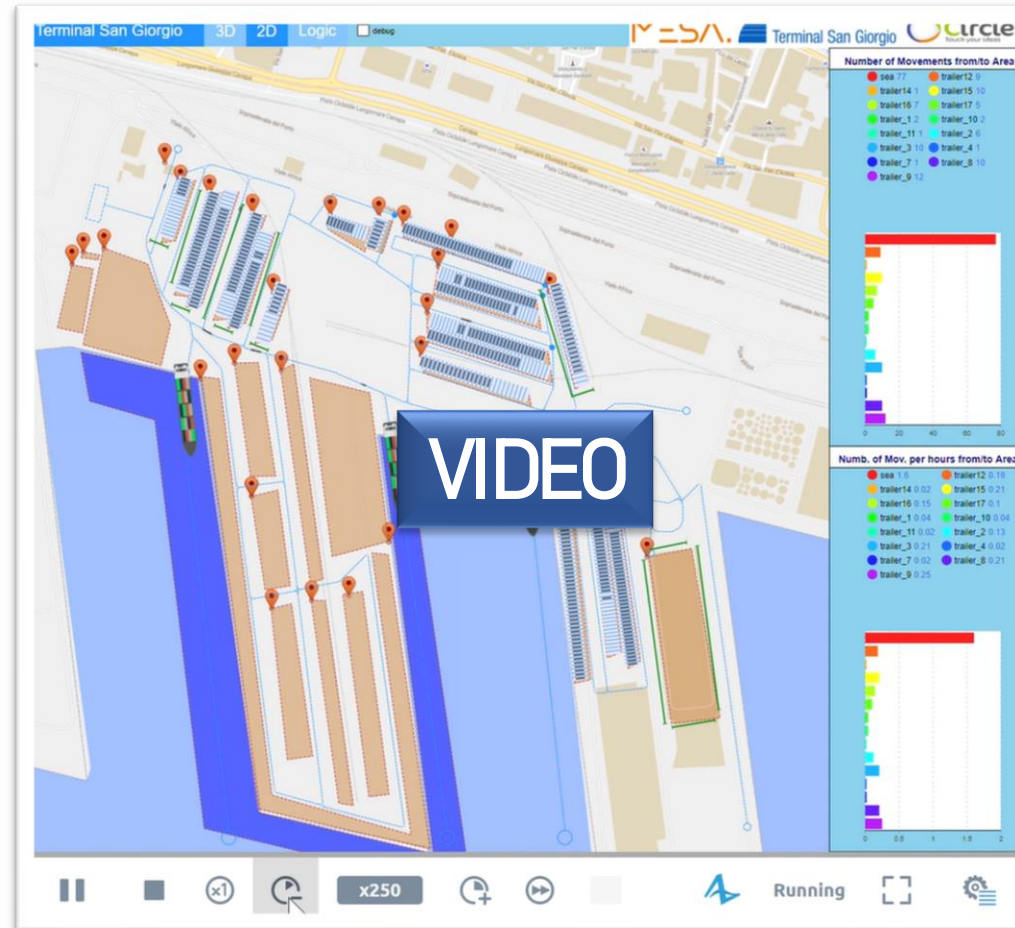


# DIGITAL TWIN





# DIGITAL TWIN

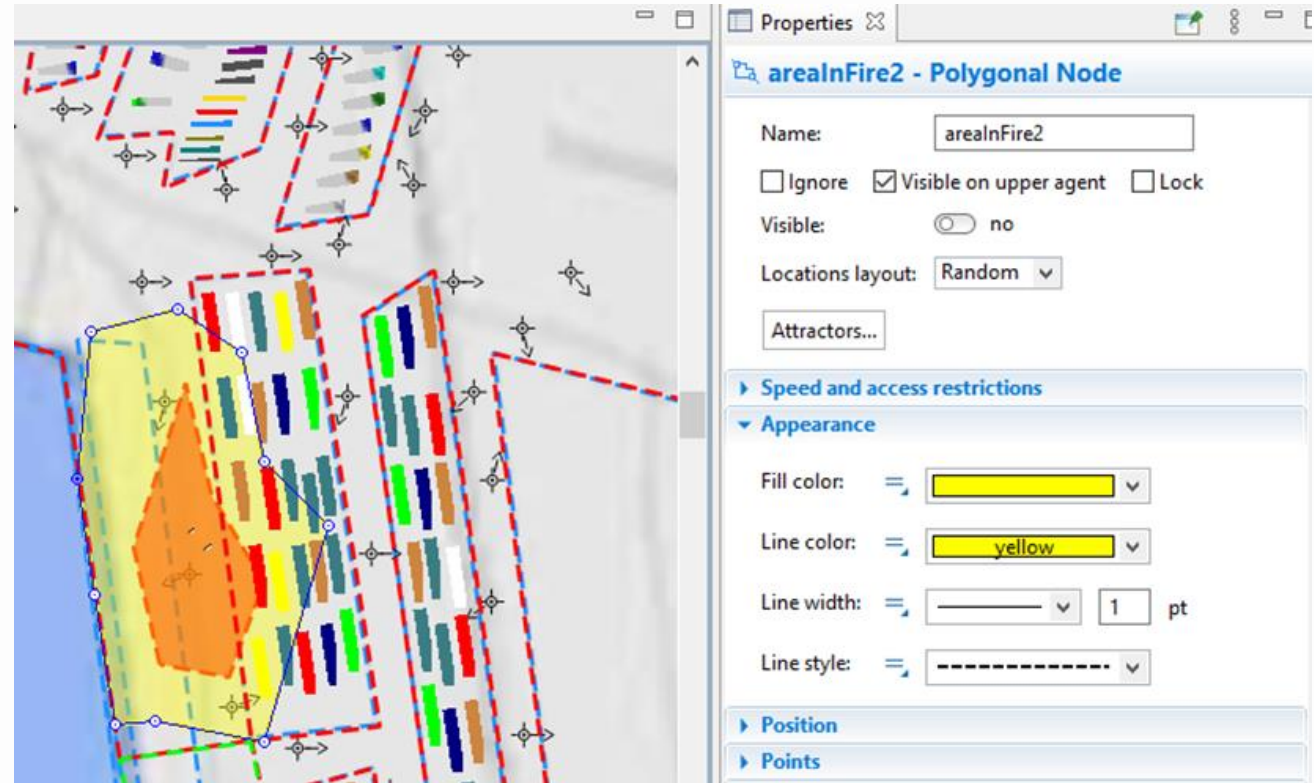




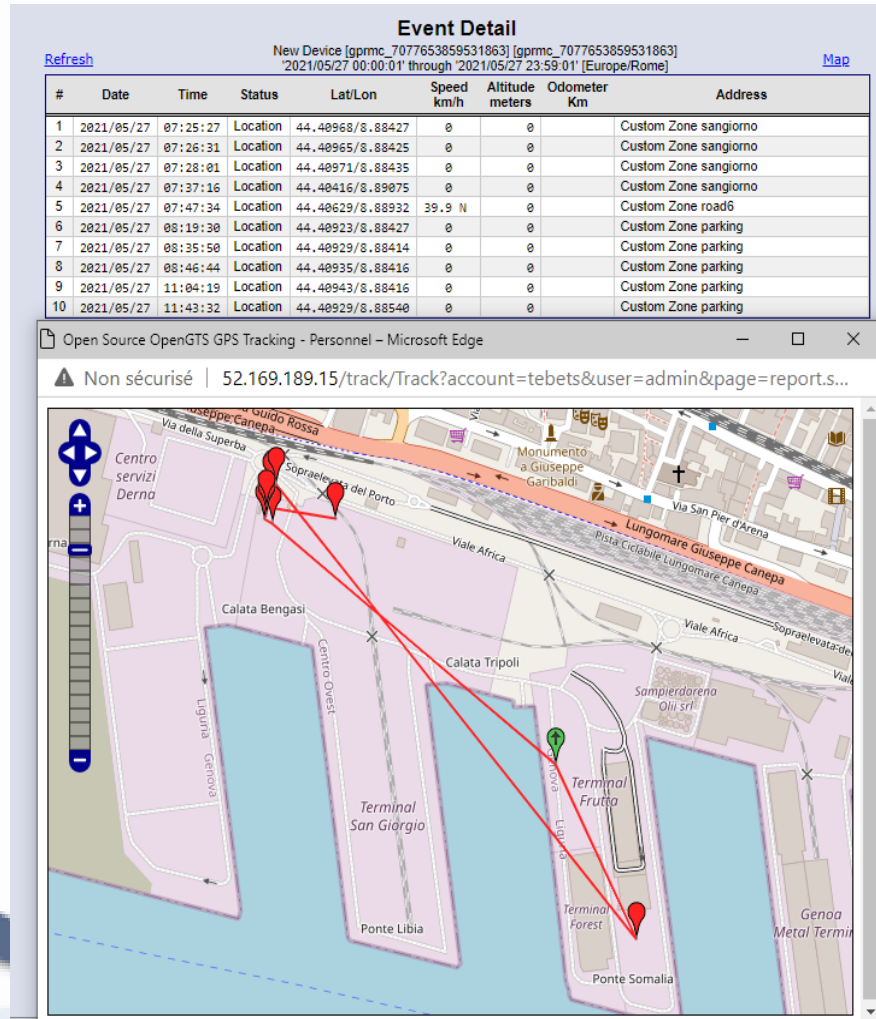
The Digital Twin has been integrated to both a **tracking system** (OpenGTS) and an **AI platform** (Bonsai) in order to test different sperimentations:

- 1) Fire simulation scenario
- 2) Tracking and alert system
- 3) Parking Optimization

In the fire simulation scenario, all the flows of operators and drivers has been directed towards safe areas avoiding the dangerous ones through "minimum risk" paths which are identified by artificial intelligence algorithms. The paths can be communicated directly to the operators and to the drivers through the tracking platform and its integrated messaging system (SMS, What's-up, e-mail).



# TRACKING AND ALERT SYSTEM



The tracking system is able to perform “Reverse Geocoding” and locate the sector of any moving entity, hence it can determine a sequence of automatic actions using an ITTT (If This Than That) logic. A “Rule Engine” function was introduced to link actions sequences to the right conditions.

# PARKING OPTIMIZATION



Knowing the system status and the equipment position allow the simulation of the terminal evolution and gives the AI model the possibility to identify the best choice each time.

For instance, given the event 'trailer arrival at gate', the AI model can determine the best parking spot in order to:

- ensure better performances of the import/export process (throughput increase, demurrage decrease, etc.)
- reduction of collision risks

<input type="radio"/>	trailer_1	Custom Zone trailer_1	Polygon	Yes	Yes	Yes	--	44.40934 / 8.88473
<input type="radio"/>	trailer_10	Custom Zone trailer_10	Polygon	Yes	Yes	Yes	--	44.40909 / 8.88646
<input type="radio"/>	trailer_11	Custom Zone trailer_11	Polygon	Yes	Yes	Yes	--	44.40908 / 8.88701
<input type="radio"/>	trailer_2	Custom Zone trailer_2	Polygon	Yes	Yes	Yes	--	44.40926 / 8.88507
<input type="radio"/>	trailer_3	Custom Zone trailer_3	Polygon	Yes	Yes	Yes	--	44.40910 / 8.88556
<input type="radio"/>	trailer_4	Custom Zone trailer_4	Polygon	Yes	Yes	Yes	--	44.40844 / 8.88580
<input type="radio"/>	trailer_5	Custom Zone trailer_5	Polygon	Yes	Yes	Yes	--	44.40881 / 8.88385
<input type="radio"/>	trailer_6	Custom Zone trailer_6	Polygon	Yes	Yes	Yes	--	44.40869 / 8.88690
<input type="radio"/>	trailer_7	Custom Zone trailer_7	Polygon	Yes	Yes	Yes	--	44.40792 / 8.88750
<input type="radio"/>	trailer_8	Custom Zone trailer_8	Polygon	Yes	Yes	Yes	--	44.40828 / 8.88757
<input type="radio"/>	trailer_9	Custom Zone trailer_9	Polygon	Yes	Yes	Yes	--	44.40866 / 8.88770
<input type="radio"/>	trailer12	Custom Zone trailer12	Polygon	Yes	Yes	Yes	--	44.40901 / 8.88730
<input type="radio"/>	trailer13	Custom Zone trailer13	Polygon	Yes	Yes	Yes	--	44.40889 / 8.88785
<input type="radio"/>	trailer14	Custom Zone trailer14	Polygon	Yes	Yes	Yes	--	44.40845 / 8.88898
<input type="radio"/>	trailer15	Custom Zone trailer15	Polygon	Yes	Yes	Yes	--	44.40710 / 8.88898
<input type="radio"/>	trailer16	Custom Zone trailer16	Polygon	Yes	Yes	Yes	--	44.40711 / 8.88936
<input type="radio"/>	trailer17	Custom Zone trailer17	Polygon	Yes	Yes	Yes	--	44.40698 / 8.88958



# THANK YOU



Competence center START 4.0

Veronica Asta

OPTIMeasy, Founder

[veronica.asta@optimeasyway.com](mailto:veronica.asta@optimeasyway.com)

December 16<sup>th</sup>, 2021

